

1 **Factors associated with the increased risk of atlantoaxial osteoarthritis: A**
2 **retrospective study**

3

4 Yuma Suga¹), Hideki Shigematsu¹), Masato Tanaka²), Akinori Okuda³), Sachiko
5 Kawasaki¹), Yusuke Yamamoto³), Masaki Ikejiri¹), Hideki Asai³), Hidetada
6 Fukushima³), Yasuhito Tanaka¹)

7

8 ¹Department of Orthopedics and Surgery, Nara Medical University, Nara, Japan

9 ²Department of Orthopedic Surgery, Otemae Hospital, Osaka, Japan

10 ³Department of Emergency and critical care center, Nara Medical University, Nara, Japan

11

12 Corresponding author: Hideki Shigematsu

13 Department of Orthopedics and Surgery, Nara Medical University, Kashihara, Nara

14 6348522, Japan

15 Tel: (+81) 744-22-3051

16 Fax: (+81) 744-29-6443

17 Email: shideki@naramed-u.ac.jp

18

1 **Abstract**

2 Purpose Atlantodens osteoarthritis and atlantoaxial osteoarthritis cause neck pain and
3 suboccipital headaches. Currently, knowledge on the risk factors for atlantoaxial
4 osteoarthritis is lacking. This study aimed to investigate the factors related to the
5 increased risk of atlantoaxial osteoarthritis.

6 Methods We analyzed computed tomography (CT) images of the upper cervical spine of
7 1266 adult trauma patients for whom upper cervical spine CT was performed at our
8 hospital between 2014 and 2019. The degree of atlantoaxial osteoarthritis was quantified
9 as none-to-mild (not having osteoarthritis) or moderate-to-severe (having osteoarthritis).
10 Risk factors associated with atlantoaxial osteoarthritis were identified using univariate
11 and multivariable logistic regression analyses.

12 Results The study group included 69.4% men, and the overall average age of the study
13 population was 54.9 ± 20.4 years. The following factors were independently and
14 significantly associated with atlantoaxial osteoarthritis in the multivariable logistic
15 regression analysis: age in the sixth decade or older (odds ratio [OR], 20.5; 95%
16 confidence interval [CI], 6.2–67.2, $p < 0.001$), having calcific synovitis (OR, 4.9; 95%
17 CI, 2.4–9.9, $p < 0.001$), women sex (OR, 3.3; 95% CI, 1.9–5.7, $p = 0.002$), and not having
18 atlantodens osteoarthritis (OR, 2.1; 95% CI, 1.2–3.8, $p = 0.014$).

1 Conclusion In the multivariable logistic regression analysis, age in the sixth decade or
2 older, calcification of the transverse ligament, being women, and not having atlantodens
3 osteoarthritis were found to be significantly associated with atlantoaxial osteoarthritis.
4 Delayed diagnosis and treatment can be avoided by focusing on these risk factors.

5

6 Keywords

7 Neck pain, Suboccipital headaches, Atlantoaxial osteoarthritis, Atlantodens joint,
8 Calcification, Transverse ligament

9

10

11

12

13

14

15

16

17

18

1 **Introduction**

2 Neck pain is a common condition, and its 12-month prevalence is estimated to be within
3 30%–50% [1]. Most patients with neck pain generally do not require treatment, as it does
4 not have a severe effect on daily life [2]. However, some patients require treatment for
5 prolonged, repetitive symptoms of neck pain and accompanying suboccipital headache.

6 In particular, osteoarthritis (OA) of the atlantoaxial joints is a cause of neck pain and
7 suboccipital headache [3–6]. Pain from atlantoaxial osteoarthritis (AAOA) may
8 predominate on the side affected by severe OA and is worsened by neck rotation and
9 bending toward this side [7, 8].

10 Conservative treatment is not sufficient to relieve symptoms of AAOA [7]. Initially, the
11 symptoms of AAOA are non-specific and difficult to distinguish. Therefore, the diagnosis
12 of AAOA is often delayed [9]. Recently, surgical treatment has been accepted as an
13 effective therapy. Atlantoaxial fixation surgery is useful in cases of AAOA that are
14 unresponsive to conservative management [7–10].

15 A few reports have indicated that the prevalence of AAOA increases with age [3, 11–15].
16 According to those reports, the estimated prevalence of AAOA in the Western population
17 is 4.8%, which increases to 5.4% in the sixth decade and 18.2% in the ninth decade of life
18 [15]. In the clinical setting, we usually obtain anteroposterior and lateral cervical

1 radiographs of patients with neck pain, but a standard transoral atlas view is often not
2 obtained. As it is difficult to detect AAOA on anteroposterior and lateral cervical
3 radiographs, we need a standard transoral atlas view to detect AAOA. Nevertheless, no
4 clinical studies have clarified the risk factors for AAOA, which raises the question
5 concerning those patients for whom a transoral view should be considered. Therefore, this
6 study aimed to investigate the factors related to the increased risk of AAOA.

7

8 **Methods**

9 This study was approved by our institution's Ethics Review Board (approval no. 2758).

10 The need for informed consent from the patients was waived considering the retrospective
11 nature of the study.

12 Individuals eligible for our study were adult patients who were transferred to our
13 emergency and critical care center and required computed tomography (CT) of their
14 cervical spine as part of their diagnostic examination, between January 1, 2014, and
15 December 31, 2019 (n = 1694). Patients with rheumatoid arthritis, those on dialysis, those
16 with a tumor in the cervical spine, those aged < 17 years, and those with a current/prior
17 cervical spinal fracture and previous cervical surgery were excluded. The flow diagram
18 of patient enrolment is presented in Fig. 1. Eventually, 1266 patients met our inclusion

1 criteria.

2 The patients were classified into age groups (18–19 years, second decade, third decade,
3 fourth decade, fifth decade, sixth decade, seventh decade, and eighth decade or older) for
4 analysis.

5 ***CT measurements***

6 Cervical spine images were obtained using an Optima CT660 scanner (Optima Corp.,
7 Tokyo, Japan). Based on sagittal and coronal CT views, we classified OA as atlantodens
8 and atlantoaxial. We used the scoring system reported by Lakshmanan et al. [16], with
9 severity graded as follows: none, mild, moderate, and severe. Based on the method given
10 by Betsch et al. [13], the grades of “none–mild” were classified as “absence of OA,”
11 whereas grades of “moderate” and “severe” were classified as “presence of OA” (Table
12 1, Fig. 2). An intraosseous cyst within the odontoid process and calcific synovitis were
13 defined as having a lytic defect in the odontoid process and calcification in the transverse
14 ligament, respectively (Fig. 3) [13]. OA grades, presence or absence of intraosseous cysts,
15 and calcific synovitis were evaluated by two raters. Inter-observer reliability was
16 evaluated using the Kappa statistic (κ) for atlantodens OA and AAOA grades and the
17 presence or absence of intraosseous cysts and calcific synovitis.

18 ***Statistical analysis***

1 The association of AAOA with the presence or absence of atlantodens OA, age (sixth
2 decade or older, or not), presence or absence of intraosseous cyst, and calcific synovitis
3 were analyzed using a chi-squared test, with the calculation of odds ratios (ORs) and 95%
4 confidence intervals (CIs). A p-value <0.05 was considered significant. The variables that
5 were significantly associated with AAOA in the univariate analysis were included in the
6 multivariate analysis. In this study, we evaluated the relationship of risk factors, such as
7 age, sex, calcific synovitis, intraosseous cyst, and not having atlantodens OA with AAOA
8 by using a multivariable logistic regression analysis. Variables eligible for inclusion in
9 the multivariate models involved those considered associated with an increased risk of
10 AAOA in the literature. After identification of the main effects in the logistic regression
11 models, we checked the models for goodness of fit with the Hosmer–Lemeshow test and
12 tested for co-linearity and residuals to ensure that they fit the data. All analyses were
13 performed using SPSS (version 26; SPSS Inc., Tokyo, Japan).

14

15 **Results**

16 *Demographic data*

17 The age categories of 1266 patients were reported, and the age in our cohort ranged from
18 18 to 98 (mean, 54.9 ± 20.4) years. This study included 879 men (69.4%) and 387 women

1 (30.6%). In patients diagnosed with AAOA, the mean age was 75.1 ± 9.5 years, and the
2 proportion of men and women were 39.3% and 60.7%, respectively (Table 2).

3 ***Prevalence***

4 Approximately 2.2% of patients had AAOA and their grade distribution was as follows:
5 none-to-mild, 97.8%; moderate, 1.9%; and severe, 0.3% (Table. 3, Fig. 4). Furthermore,
6 the prevalence of AAOA was approximately 2.5%, which increased to 4.5% in the group
7 in the sixth decade and 12.3% in those in the eighth decade or older in this study.
8 Atlantodens OA was present in 33.3% of our patients, and the proportion of each grade
9 was as follows: none-to-mild, 66.7%; moderate, 30.1%; and severe, 3.2% (Fig. 5). The
10 overall prevalence rates of intraosseous cyst and calcific synovitis were 10.8% and 3.6%,
11 respectively. When we included patients diagnosed with AAOA, the prevalence rates of
12 atlantodens OA, intraosseous cysts, and calcific synovitis was 35.7%, 21.4%, and 26.8%,
13 respectively (Table 2). Kappa values indicated strong positive inter-rater agreement ($\kappa =$
14 0.76, $\kappa = 0.86$, $\kappa = 0.78$, and $\kappa = 0.86$, respectively).

15 ***Risk factors for AAOA***

16 In the univariate analysis, the following factors were independently and significantly
17 associated with AAOA (Table 4): age in the sixth decade or older ($p < 0.001$), calcific
18 synovitis ($p < 0.001$), women sex ($p < 0.001$), and presence of intraosseous cysts ($p <$

1 0.001). Overall, no significant association was found between atlantodens OA and AAOA
2 in our cases ($p = 0.702$). However, when we observed cases in the sixth decade or older,
3 the following factors were found to be independently and significantly associated with
4 AAOA: presence of calcific synovitis ($p < 0.001$), not having atlantodens OA ($p = 0.011$),
5 and women sex ($p < 0.001$) (Table 5). Risk factors associated with AAOA in the univariate
6 analysis are presented in Tables 4 (all patients) and 5 (patients in their sixth decade or
7 older).

8 The results of the multivariate analysis to identify independent risk factors for AAOA are
9 shown in Table 6. The following factors were found to be independently and significantly
10 associated with AAOA: age in the sixth decade or older ($p < 0.001$), calcific synovitis (p
11 < 0.001), women sex ($p = 0.002$), and not having atlantodens OA ($p = 0.014$).

12

13 **Discussion**

14 In this study, we investigated the risk factors associated with AAOA and found that age
15 in the sixth decade or older, presence of calcific synovitis, being women, and not having
16 atlantodens OA were associated with AAOA by using the multivariable logistic regression
17 analysis.

18 ***Relationship between age and AAOA***

1 To date, several studies have reported an increased prevalence of AAOA associated with
2 aging [12-15, 17]. Betsch et al. [13] reported a prevalence of 9.5%–9.8% for AAOA.
3 However, another study by Li et al. [12] reported a higher prevalence of AAOA (25%),
4 which may be attributed to the inclusion of patients with neck discomfort in this study.
5 Few studies have shown the relationship between the prevalence of AAOA and aging.
6 Betsch et al. [13] observed that the prevalence of AAOA is <10% between the age of 18
7 and 67 years, and it increases to 35%–45% among individuals aged ≥ 88 years. Zapletal
8 et al. [15] also found an increase in the prevalence of AAOA from 5.4% in the sixth decade
9 to 18.2% in the ninth decade of life. Based on these findings, it can be inferred that head
10 loading (a load carried on the head) for a long time increases the risk for AAOA [3,13].
11 Therefore, when old patients present with occipital or posterior neck pain, it is important
12 to adopt an appropriate treatment considering the possibility of AAOA.

13 ***Relationship between calcific synovitis and AAOA***

14 Calcium pyrophosphate dihydrate deposition (CPPD) is well known to be present in the
15 joints and/or soft tissues and results in pseudogout and crown dens syndrome [18-20].
16 Joint destruction due to crystal-induced arthritis and pseudogout results from
17 inflammation induced by CPPD deposition within the joints [19, 21]. Kobayashi et al.
18 [20] reported the involvement of the lateral atlantoaxial joint in acute neck pain, and the

1 presence of calcific synovitis was evaluated using CT.

2 In our study, calcific synovitis and CPPD crystals were identified in 76.9% of patients in
3 whom the joint fluid could be obtained from the lateral atlantoaxial joint. However, no
4 patient had CPPD crystals in the joint fluid of the lateral atlantoaxial joint in the group
5 without calcific synovitis. Therefore, CPPD arthropathy in the atlantoaxial joint might be
6 caused by the calcification of the transverse ligament of the atlas, which resulted in
7 AAOA.

8 ***Relationship between sex and AAOA***

9 In our study, the prevalence of AAOA was significantly higher in women. Kobayashi et
10 al. [20] also reported that women were more likely to be affected by AAOA. Jones et al.
11 [22] observed that men had a 16%–31% higher cartilage volume in the knee. Similarly,
12 the cartilage of the cervical facet joints in women may also be less than that in men.
13 However, in this study, the reason for this difference could not be explained unequivocally
14 because data on the cervical spine were lacking. Further studies are needed on the
15 cartilage of the cervical facet joint.

16 ***Relationship between atlantodens OA and AAOA***

17 The atlas and axis are greatly different from other vertebrae in terms of their embryology
18 and anatomy. The atlantodens joint is formed by the insertion of the dens into the ring of

1 the atlas. The principal role of the atlantodens and atlantoaxial joint is rotation, which
2 contributes to 40%–70% of the total rotation available at the cervical spine [6]. Studies
3 have reported that the increased prevalence of AAOA with age results from this high
4 degree of rotation available at these two segments [4-6, 11].

5 To our knowledge, only a few studies have shown the relationship between the
6 atlantodens and atlantoaxial joints. Harata et al. [17] reported that AAOA was categorized
7 into three types, namely, the lateral atlanto-axial joint type, atlanto-odontoid joint type,
8 and mixed type, and AAOA could occur separately without atlantodens OA. In other
9 reports, the total cervical range of motion was not affected by aging, but the cervical range
10 of motion of the atlantoaxial joint was decreased in a cadaveric study. This decrease in
11 atlantoaxial motion was likely caused by OA of the atlantodens [16, 23]. We hypothesized
12 that atlantoaxial motion is decreased, the load on the atlantoaxial joint is reduced, and
13 AAOA is inferred. In contrast, the range of motion of the atlantoaxial joint was
14 maintained and AAOA could not be inferred in cases without OA of the atlantodens.
15 Based on these findings, it can be inferred that OA of the atlantodens joint might have
16 suppressed the occurrence of AAOA. However, only a few reports have indicated the
17 relationship between AAOA and the range of motion of the C1/2 rotation. Further studies
18 on these relationships are needed.

1 ***Which factors should we consider for taking a transoral atlas view in patients?***

2 In this study, we found four factors associated with AAOA: age (sixth decade or older),
3 calcification of the transverse ligament, being women, and not having the atlantodens OA
4 on anteroposterior and lateral cervical radiographs. Therefore, all these factors must be
5 considered while taking a transoral view in patients with occipital or posterior neck pain.

6 ***Study limitations***

7 This study had some limitations. First, selection bias cannot be denied, given the
8 retrospective design of the study. Prospective studies, either longitudinal evaluation of the
9 degenerative changes during individuals' lives or cross-sectional evaluation of randomly
10 selected subjects from the general population, would be ideal. However, the feasibility of
11 such a study could not be justified because of the cost and amount of lifetime radiation
12 exposure of the patients. Second, our study population involved adult patients who were
13 transferred to our emergency and critical care center and, therefore, might not fully reflect
14 the general population. However, our study had the advantage of including a large sample
15 of older patients than in previous reports. Third, information concerning neck and
16 suboccipital pain was not collected. Therefore, we could not clarify the relationship
17 between pain and degenerative changes in AAOA. Finally, we could not evaluate cervical
18 alignment under the influence of gravity, because CT was performed in a supine posture.

1 Koller et al. [24] reported that altered joint anatomy of C1–2 (deformation and
2 malalignment of C1–2) caused AAOA in patients with C2-fractures. Future studies should
3 evaluate cervical alignment under the influence of gravity in radiographs.

4

5 **Conclusion**

6 In the multivariable logistic regression analysis, we showed that age (sixth decade or
7 older), calcification of the transverse ligament, being women, and not having atlantodens
8 OA are factors indicating the increased risk of AAOA in our cohort. Therefore, taking a
9 transoral atlas view in radiographs or CT is necessary for patients having these factors
10 and occipital or posterior neck pain. Delayed diagnosis and treatment can be avoided by
11 focusing on these risk factors.

12

13

14

15

16

17

18

1 **References**

- 2 1. Hogg-Johnson S, van der Velde G, Carroll LJ, Holm LW, Cassidy JD, Guzman J, Côté
3 P, Haldeman S, Ammendolia C, Carragee E, Hurwitz E, Nordin M, Peloso P (2008)
4 The burden and determinants of neck pain in the general population: Results of the
5 Bone and Joint Decade 2000-2010 Task Force on Neck Pain and Its Associated
6 Disorders. *Eur Spine J* 17:39–51. <https://doi.org/10.1097/BRS.0b013e31816454c8>
- 7 2. Chiu TT, Leung AS (2006) Neck pain in Hong Kong: A telephone survey on
8 prevalence, consequences, and risk groups. *Spine (Phila Pa 1976)* 31:E540–E544.
9 <https://doi.org/10.1097/01.brs.0000225999.02326.ad>
- 10 3. Badve SA, Bhojraj S, Nene A, Raut A, Ramakanthan R (2010) Occipito-atlanto-axial
11 osteoarthritis: A cross sectional clinico-radiological prevalence study in high risk and
12 general population. *Spine (Phila Pa 1976)* 35:434–438.
13 <https://doi.org/10.1097/BRS.0b013e3181b13320>
- 14 4. Halla JT, Hardin JG Jr (1987) Atlantoaxial (C1-C2) facet joint osteoarthritis: A
15 distinctive clinical syndrome. *Arthritis Rheum* 30:577–582.
16 <https://doi.org/10.1002/art.1780300514>
- 17 5. Schaeren S, Jeanneret B (2005) Atlantoaxial osteoarthritis: Case series and review of
18 the literature. *Eur Spine J* 14:501–506. <https://doi.org/10.1007/s00586-004-0856-4>

- 1 6. Zapletal J, Hekster RE, Straver JS, Wilmink JT, Hermans J (1996) Relationship
2 between atlanto-odontoid osteoarthritis and idiopathic suboccipital neck pain.
3 *Neuroradiology* 38:62–65. <https://doi.org/10.1007/BF00593224>
- 4 7. Adogwa O, Buchowski JM, Sielatycki JA, Shlykov MA, Theologis AA, Lin J,
5 CreveCoeur T, Peters C, Riew KD (2020) Improvements in neck pain and disability
6 following C1-C2 posterior cervical instrumentation and fusion for atlanto-axial
7 osteoarthritis. *World Neurosurg* 139:e496–e500.
8 <https://doi.org/10.1016/j.wneu.2020.04.051>
- 9 8. Fung M, Frydenberg E, Barnsley L, Chaganti J, Steel T (2018) Clinical and
10 radiological outcomes of image guided posterior C1-C2 fixation for atlantoaxial
11 osteoarthritis (AAOA). *J Spine Surg* 4:725–735.
12 <https://doi.org/10.21037/jss.2018.12.04>
- 13 9. Grob D, Bremerich FH, Dvorak J, Mannion AF (2006) Transarticular screw fixation
14 for osteoarthritis of the atlanto axial segment. *Eur Spine J* 15:283–291.
15 <https://doi.org/10.1007/s00586-005-0963-x>
- 16 10. Elliott RE, Tanweer O, Smith ML, Frempong-Boadu A (2013) Outcomes of fusion
17 for lateral atlantoaxial osteoarthritis: meta-analysis and review of literature. *World*
18 *Neurosurg* 80:e337–e346. <https://doi.org/10.1016/j.wneu.2012.08.018>

- 1 11. Zapletal J, Hekster RE, Straver JS, Wilmink JT (1995) Atlanto-odontoid osteoarthritis.
2 Appearance and prevalence at computed tomography. *Spine (Phila Pa 1976)* 20:49–
3 53. <https://doi.org/10.1097/00007632-199501000-00009>
- 4 12. Liu K, Lü Y, Cheng D, Guo L, Liu C, Song H, Chhabra A (2014) The prevalence of
5 osteoarthritis of the atlanto-odontoid joint in adults using multidetector computed
6 tomography. *Acta Radiol* 55:95–100. <https://doi.org/10.1177/0284185113492722>
- 7 13. Betsch MW, Blizzard SR, Shinseki MS, Yoo JU (2015) Prevalence of degenerative
8 changes of the atlanto-axial joints. *Spine J* 15:275–280.
9 <https://doi.org/10.1016/j.spinee.2014.09.011>
- 10 14. Li M, Liu S, Kong Q, Sun H, Zhang X, Wang G (2016) Incidence and age and gender
11 profiles of hyperplasia in individual cervical vertebrae. *J Int Med Res* 44:917–922.
12 <https://doi.org/10.1177/0300060516645038>
- 13 15. Zapletal J, de Valois JC (1997) Radiologic prevalence of advanced lateral C1-C2
14 osteoarthritis. *Spine (Phila Pa 1976)* 22:2511–2513.
15 <https://doi.org/10.1097/00007632-199711010-00009>
- 16 16. Lakshmanan P, Jones A, Howes J, Lyons K (2005) CT evaluation of the pattern of
17 odontoid fractures in the elderly—relationship to upper cervical spine osteoarthritis.
18 *Eur Spine J* 14:78–83. <https://doi.org/10.1007/s00586-004-0743-z>

- 1 17. Harata S, Tohno S, Kawagishi T (1981) Osteoarthritis of the alanto-axial joint. Int
2 Orthop 5:277–282. <https://doi.org/10.1007/BF00271083>
- 3 18. Saylısoy S (2020) A case of acute calcium pyrophosphate arthritis in two rare sites of
4 involvement: The cervical facet and atlantoaxial joint. Jt Dis Relat Surg 31:395–398.
5 <https://doi.org/10.5606/ehc.2020.74329>
- 6 19. Feydy A, Lioté F, Carlier R, Chevrot A, Drapé JL (2006) Cervical spine and crystal-
7 associated diseases: Imaging findings. Eur Radiol 16:459–468.
8 <https://doi.org/10.1007/s00330-005-2776-z>
- 9 20. Kobayashi T, Miyakoshi N, Konno N, Abe E, Ishikawa Y, Shimada Y (2014) Acute
10 neck pain caused by arthritis of the lateral atlantoaxial joint. Spine J 14:1909–1913.
11 <https://doi.org/10.1016/j.spinee.2013.10.054>
- 12 21. Hsu H, Siwec RM (2021) Knee osteoarthritis. StatPearls Publishing, Treasure Island,
13 FL.
- 14 22. Jones G, Glisson M, Hynes K, Cicuttini F (2000) Sex and site differences in cartilage
15 development: A possible explanation for variations in knee osteoarthritis in later life.
16 Arthritis Rheum 43:2543–2549. [https://doi.org/10.1002/1529-0131\(200011\)43:11<2543::AID-ANR23>3.0.CO;2-K](https://doi.org/10.1002/1529-0131(200011)43:11<2543::AID-ANR23>3.0.CO;2-K)
- 17
18 23. ten Have HA (1978). Antero-posterior mobility and degenerative changes of the

- 1 cervical spine (in Dutch). Thesis Leiden, Visdruk Alphen aan den Rijn.
- 2 24. Koller H, Acosta F, Forstner R, Zenner J, Resch H, Tauber M, Lederer S, Auffarth A,
3 Hitzl W (2009) C2-fractures: part II. A morphometrical analysis of computerized
4 atlantoaxial motion, anatomical alignment and related clinical outcomes. *Eur Spine J*
5 18:1135–1153. <https://doi.org/10.1007/s00586-009-0901-4>

6

7

8

9

10

11

12

13

14

15

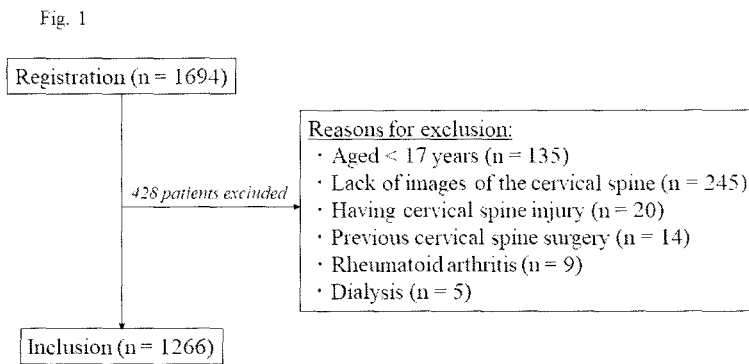
16

17

18

1 **Figure legends**

2 **Fig. 1** Flow diagram of patient enrolment

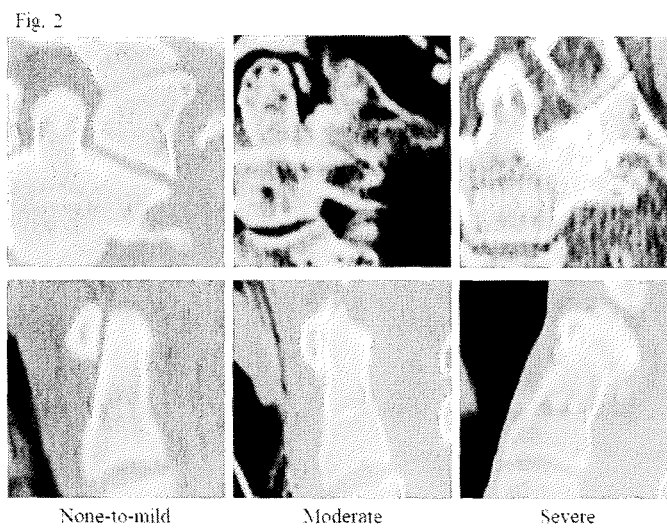


3

4 **Fig. 2** Evaluation of atlantoaxial osteoarthritis and atlantodens osteoarthritis.

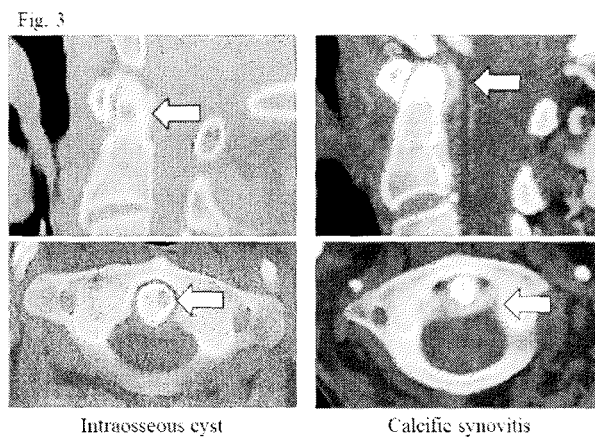
5 Representative computed tomography scans of none-to-mild (left), moderate (middle),

6 and severe (right) cases in the coronal plane

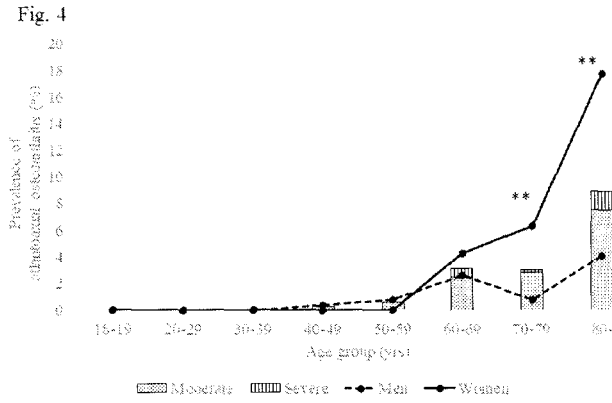


7

- 1 **Fig. 3** Evaluation of an intraosseous cyst within the odontoid process and calcific
2 synovitis. Representative computed tomography scans of the odontoid process in the
3 sagittal plane: intraosseous cyst (left) and calcific synovitis (right)



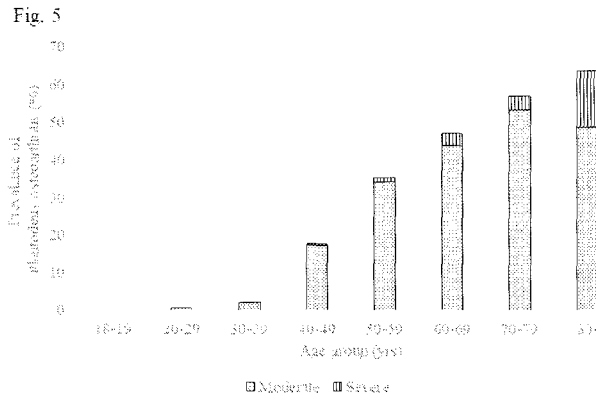
- 4
5 **Fig. 4** Prevalence of atlantoaxial osteoarthritis among the age and sex groups. Overall
6 atlantoaxial osteoarthritis was identified in 2.2% of the cases (moderate, 1.9%; severe,
7 0.3%). The prevalence was significantly higher in women patients aged >70 years than in
8 their men counterparts (* $p < 0.05$, ** $p < 0.01$)



1

2 **Fig. 5** Prevalence of atlantodens osteoarthritis with age. Overall, atlantodens

3 osteoarthritis was identified in 33.3% of cases (moderate, 30.1%; severe, 3.2%)



4

5

6

7

1 Table 1. Grading of atlantodens and atlantoaxial osteoarthritis

None-to-mild	Normal or narrow joint space with or without minor osteophyte formation
Moderate	Obliterated joint space with or without osteophyte formation
Severe	Ankylosis of the joint with excrescences either in the joint or transverse ligament calcification, or both

2 Classification was as follows: absence of osteoarthritis, “none” and “mild grades”;
 3 presence of osteoarthritis, “moderate” and “severe grades”

4

5 Table 2. Summary of patient demographic data

Characteristics	Total	With atlantoaxial osteoarthritis
Age (years)	54.9	75.1
Sex (%)		
Men	69.4	39.3
Women	30.6	60.7
Atlantodens osteoarthritis (%)	33.3	35.7
Intraosseous cysts (%)	10.8	21.4
Calcific synovitis (%)	3.6	26.8

6

7

1 Table 3. The prevalence of OA in each age group

Prevalence	18-19	20-29	30-39	40-49	50-59	60-69	70-79	80-	total
All	0.0	0.0	0.0	0.3	0.6	3.1	3.0	8.6	2.2
male	0.0	0.0	0.0	0.4	0.8	2.6	0.8	4.1	1.3
female	0.0	0.0	0.0	0.0	0.0	4.3	6.3	17.7	4.4

2

3 Table 4. Univariate associations of risk factors and atlantoaxial osteoarthritis in the overall

4 study population

	Odds ratio	95% CI	p-value
Age: sixth decade or older	20.4	6.4–65.7	<0.001
Calcific synovitis	8.2	4.2–16.1	<0.001
Sex: Women	3.6	2.1–6.2	<0.001
Intraosseous cyst	3.1	1.7–5.7	<0.001
Not having atlantodens osteoarthritis	0.9	0.5–1.5	0.702

5

6

7

8

1 Table 5. Univariate associations of risk factors and atlantoaxial osteoarthritis in the sixth
 2 decade or older

	Odds ratio	95% CI	p-value
Calcific synovitis	4.0	2.0–7.9	<0.001
Sex: Women	3.7	2.1–6.5	<0.001
Not having atlantodens osteoarthritis	2.1	1.2–3.6	0.011
Intraosseous cyst	1.6	0.9–3.0	0.122

3

4 Table 6. Multivariate logistic regression model for the development of atlantoaxial
 5 osteoarthritis

	Odds ratio	95% CI	p-value
Age: sixth decade or older	20.5	6.2–67.2	<0.001
Calcific synovitis	4.9	2.4–9.9	<0.001
Sex: Women	3.3	1.9–5.7	0.002
Not having atlantodens osteoarthritis	2.1	1.2–3.8	0.014

6